



PLEASE READ THE ENTIRE INSTALLATION INSTRUCTIONS
BEFORE PROCEEDING WITH THE INSTALLATION

OWNER / INSTALLER RESPONSIBILITY

- The installer assumes all responsibility for **final inspection** of product quality. Inspection of the entire flooring should be done before installation. Carefully examine the flooring for color, finish and quality before installing. If the flooring is not acceptable, contact your dealer immediately.
- If the installer doubts the manufacturing or finishing quality, he or she should not install it. Once the board is installed, it is considered as acceptance by the installer and the owner, even if the installation instructions guide is absent from the box at the time of installation.

FloorTek cannot be held liable for improper installation of its products or poor judgement by the installer. FloorTek assumes no labour or installation charges.

JOB SITE INSPECTION & PREPARATION (BEFORE INSTALLATION)

- This type of flooring can be installed below, equal or above ground level.
- All work involving water or moisture (plumbing, acoustical ceilings, dry wall taping, etc.) should be completed prior to floor installation.
- Room temperature should be greater than 10 °C (50 °F) during installation. Flooring must be installed in a temperature-controlled environment, only allowing temperature changes after installation is completed.
- Temperature after installation should be kept between -60°C (-76°F) and 60°C (140°F)
- Ensure that all cartons contain the correct product.
- Product should be always stored in boxes horizontally; never store boxes on their sides. Protect corners of boxes from getting damaged.
- Handle the product with care.
- SPC is a very dense product. This results in durability, but the product is heavy. Use care and proper lifting methods when handling SPC planks.
- Always install your flooring in bright daylight to observe any imperfections such as sheen differences.
- Visually inspect all planks for any visible defects or damage prior to and during installation. Do not install any damaged planks. FloorTek will not be held responsible for any costs related to installation of unsatisfactory product.
- When installing, open several cartons at a time and use a mixture of planks from different cartons for best results and appearance.
- Floating floors require freedom to experience expansion and contraction without binding or rubbing on vertical surfaces. Bedrooms and halls should be isolated from other rooms by using a transition molding. (Ex: bedrooms adjacent to hallway or living room adjacent to hallway, etc.) Be sure to leave 6mm (1/4") around the perimeter. Do not exceed 60' spans without an expansion joint and transition moulding.

IMPORTANT

- This Collection is guaranteed for use only as a floor covering.
- This Collection is intended for indoor use only.

MATERIALS REQUIRED

- Tape Measure
- Utility Knife
- Circular Saw or Flooring Cutter
- Rubber Mallet
- Spacers
- Ruler & Pencil

CALCULATING AMOUNT OF FLOORING REQUIRED

Measure the room to calculate how much flooring to purchase. To calculate surface coverage, multiply the length by the width of the room (adding the area of any closets). Add 5-10% to total surface area to account for trimming. FloorTek recommends keeping a few planks of your new flooring for replacement in the event any planks should be damaged.

ACCLIMATION

SPC is required to acclimate to the environment in which it will be used prior to installation. During acclimation heat and air conditioning should be functional to maintain a temperature between 10°C (50°F) and 60°C (140°F). Flooring must be acclimated and installed in a temperature-controlled environment, only allowing temperature changes after install is fully completed.

NOTE: SPC is meant to be installed using a floating method only. Adhesive is not to be used with this product.

SUBFLOORS

Make sure the surface is structurally sound, clean, and dry. Floor must be level to 4.7mm per 3m radius (3/16" per 10-foot radius). We recommend that you install the SPC through joists

Maximum deflection should be no more than 1.1mm (3/64"). Substrate must be free of debris, dust, paint, varnish, wax, grease/oils, curing sealers, solvents and other contaminants. Any adhesive residue from prior flooring installations should be removed completely. When preparing substrate do not use products with citrus oils, solvents, or petroleum, as these can stain and cause expansion damage in SPC flooring.

FloorTek SPC is waterproof itself but is not for use as moisture barrier. SPC Flooring should never be glued.

RADIANT-HEATED SUBFLOOR

FloorTek's SPC can be installed over electric or water radiant heat systems. You must follow the manufacturer's recommendations.

WOOD SUBFLOOR

Loose plywood boards and/or squeaking must be repaired prior to installation. To do so, it is recommended to screw or nail every 15cm (6") on joists. Ensure the surface is structurally sound, clean, and dry. Floor must be level to 4.7mm per 3m radius (3/16" per 10-foot radius). Maximum deflection should be no more than 1.1mm (3/64"). To ensure this all indents from fasteners and joints should be leveled and smoothed using a suitable compound.

CONCRETE SUBFLOOR

Concrete subfloors must be fully inspected before installation. If they do not meet the following requirements, do not install new flooring overtop. Concrete must have a compressive strength rated 3500 psi or higher. Curing agents/hardeners should not be used as they could cause bonding failure. Floor must be level to 4.7mm per 3m radius (3/16" per 10-foot radius). Maximum deflection should be no more than 1.1mm (3/64"). To ensure this all indents from fasteners and joints should be leveled and smoothed using a suitable compound.

Concrete subfloors must be completely dry for at least 60 days prior to installing new flooring and moisture levels should be tested. The moisture vapor emission rate should not exceed 2.27 kg/92.9 sqm (5 lb/1000 sq ft) per 24 hours, as per ASTM F1869. If using the ASTM F2170 test method, the internal relative humidity must be below 80%, and pH level must be between 7 and 9. If either alkalinity or moisture results are not suitable, a 6-mil minimum polyethylene plastic moisture barrier must be applied prior to installation of SPC.

OTHER TYPES OF SUBFLOORS / UNDERLAYMENTS

No additional underlayment is required.

When removing old residue prior to installing SPC, DO NOT USE solvents or citrus based removers as these may damage or stain the new flooring.

PREPARATION

1. Decide which direction the planks will be installed (it is recommended that FloorTek SPC be installed running parallel to the longest wall).
2. If required, use a suitable compound to fill in any cracks or holes in the subfloor. Ensure the surface is structurally sound, clean, and dry. Floor must be level to 4.7mm per 3m radius (3/16" per 10-foot radius). Maximum deflection should be no more than 1.1mm (3/64").
3. Make sure a 6mm (1/4") space must be left between walls and other obstructions such as pipes, stairs, pillars, etc. Trim mouldings can be used to cover these spaces after installation is complete. When measuring to install around pipes, drill holes 12mm (1/2") larger than the pipes.
4. When possible avoid placing joints of SPC overtop of joints/seams of subfloor. End joints of boards should be staggered at least 18cm (7") apart. Plan layout such that beginning, and end of rows are greater than 30cm (12") in length. Also check layout before beginning installation for planned width of final row: this should not be less than 5cm (2"). If so, make adjustments to width of first row so that both first and last will be wider than 5cm (2").
5. Do not install over expansion joints.
6. Remove thresholds, baseboards, and the existing flooring if necessary. If the pre-existing floor surface is smooth and solid you may choose to skip this step (please see substrate requirements listed above). Door trim should be undercut for best results, allowing SPC to move without being pinched. After performing these preparations vacuum/sweep installation area to remove debris and dust.

INSTALLATION

Start in a corner by placing the first plank with the tongue side facing the wall. Use spacers along each wall to maintain an expansion space of 8-12 mm (5/16 in - 3/8 in) between the wall and the flooring. **Diagram 1.**

To attach the second plank, insert the end tongue into the end groove of the very first plank at an angle of approx. 15-20 degrees. When lowered, the plank will click into place. Line up edges carefully. The planks should be flat to the floor. **Diagram 2.**

Continue connecting the first row until you reach the last full plank. Fit the last plank by rotating the plank 180 degrees with the pattern side upward, place beside row. Measure and mark, then using a ruler and utility knife, score the plank and snap off. Attach as described above. **Diagram 3.**

Begin the next row with the off cut piece from the previous row to stagger the pattern. Pieces should be a minimum of 20 cm (8 in) long and joint offset should be at least 40 cm (16 in). **Diagram 4.**

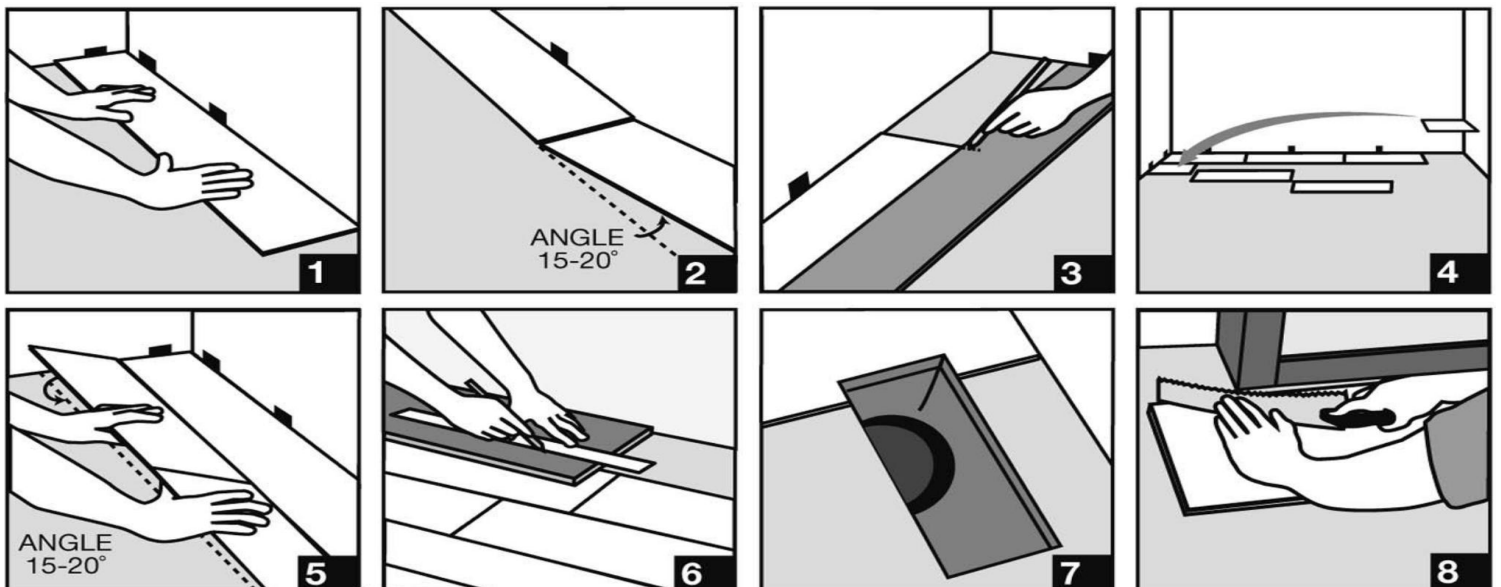
NOTE: It is faster to assemble planks into a new row at the ends and then attach the entire row to the previous row on the long sides. To start your second row, lay your first plank on the subfloor. Take your second plank, insert the end tongue into the end groove of the first plank at an angle of approx. 15-20 degrees. When lowered, the plank will click into place with light pressure. The planks should be flat to the floor. Make sure gaps are as small as possible. Continue assembling the planks this way until you have your second row complete.

To attach the second row to the first row, tilt and push the side tongue into the side groove of the first panel at an angle of approx. 15-20 degrees. Lower and click into place lining the edges up carefully. Continue laying remaining planks in this manner. **Diagram 5.**

To fit the last row, lay a plank on top of the previous row. With the tongue to the wall, lay another plank upside down on the one to be measured and use it as a ruler. Don't forget to allow room for spacers. Cut the plank and attach into position. **Diagram 6.**

Door frame and heating vents also require expansion room. First cut the plank to the correct length. Then place the cut plank next to its actual position and use a ruler to measure the areas to be cut out and mark them. Cut out the marked points allowing the necessary expansion distance on each side. **Diagram 7.**

You can trim door frames by turning a plank upside down and using a handsaw to cut away the necessary height so that planks slide easily under the frames. **Diagram 8**



THE LIMITED WARRANTY DOES NOT COVER THE FOLLOWING

- Discoloration from mold or from flooding, floods, leaking plumbing or appliances, water entering through sliding glass doorways, as well as floor covering failure due to hydrostatic pressure or moisture vapor emission.
- Problems due to improper installation
- Change of gloss level, dulling, scratching, cutting, scuffing, or chipping
- Damage caused by pets
- Problems due to accidents, abuse or improper usage
- Damage occurring during renovation or construction
- Labour is not covered by this warranty

OTHERS

To sustain warranty and ensure quick and easy service in the event of a claim, the following requirements must be met:

- Flooring must be installed according to FloorTek's Installation Instructions.
- Use appropriate and safe vinyl floor cleaning products.
- Retain five planks of the FloorTek SPC product that was used after installation for possible testing purposes.
- Retain and be able to provide the original sales receipt (or documentation confirming proof of purchase and details of purchase and installation date of the product.